

# Car features and technical specifications

New 01 Plug-in Hybrid (PHEV) - MY25





## Car features

### Description

Model	New 01 - MY25
Type	Plug-In Hybrid (PHEV)

### New 01 - MY25

#### Exterior

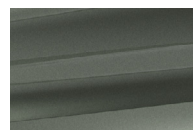
Trim level	Core	More
Acoustic front windows glass	•	•
Daytime running light - LED	•	•
Exterior mirrors - Memory and Tilt in reverse function		•
Exterior mirrors - power folding and heated	•	•
Headlights - Adaptive Front-lighting System (AFS)		•
Headlights - Home Safety Light	•	•
Headlights - LED with active high beam control	•	•
Panoramic sunroof - openable		•
Power operated tailgate		•
Power windows - one touch up/down on front windows	•	•
Rain sensing wipers	•	•
Tail lights - LED	•	•
Rear fog light	•	•
Rear windshield wiper	•	•
Roof rails	•	•
Tinted rear windows (Privacy Glass)		•
Turning light - LED with sequence flow	•	•

#### Exterior Colors

Crystal White (Metallic)	•	•
Mineral Green (Metallic)	•	•
Sparkling Black (Metallic)	•	•
Black contrast color roof		•



Crystal White (Metallic)



Mineral Green (Metallic)



Sparkling Black (Metallic)

---

**New 01 - MY25**

---

**Interior**

<b>Trim level</b>	<b>Core</b>	<b>More</b>
Auto dimming interior rear view mirror		•
Cup holders - two in front row seats	•	•
Driver seat - manual 6-way adjustable	•	
Driver seat - power 4-way lumbar support adjustment		•
Driver seat - power 8-way adjustable with memory		•
Driver sunvisor - with make-up mirror and light	•	•
Foldable rear seats with 60/40 split	•	•
Front armrest - slideable with storage	•	•
Front seat back storage pocket	•	•
Glovebox - lockable (electronic password)	•	•
Heated front seats	•	•
Interior light - color adjustable ambient light		•
Interior light - 1st row foot section light		•
Interior light - First and second row LED roof light	•	•
ISOFIX - 2nd row outer seats	•	•
ISOFIX - front passenger seat	•	•
Passenger seat - manual 6-way adjustable	•	•
Passenger sunvisor - with make-up mirror and light	•	•
Rear seat - center armrest with two cup holders		•
Steering wheel - 4-way adjustable	•	•
Steering wheel heating		•
Textile floor mats	•	•
Trunk cargo cover - Retractable	•	•
Trunk LED light	•	•
Trunk load hooks	•	•
Trunk floor mat	•	•
Upholstery in Artificial Leather (PU)		•
Upholstery in ECONYL® (recycled textile)	•	

---

**Connectivity and infotainment**

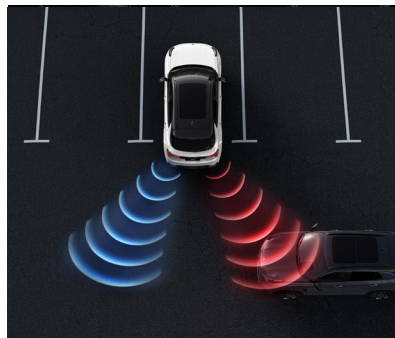
12 V power outlet in the trunk	•	•
5G Network	•	•
Apple Carplay and Android Auto (Q1 2025 via OTA)	•	•
Appstore	•	•
Audio - 8 speakers	•	
Audio - 10 speakers from Infinity by Harman (incl. subwoofer)		•
Bluetooth	•	•
Center display - 15.4"	•	•
Driver display - 10.2"	•	•
Interior selfie camera		•
Navigation	•	•
OTA (Over-The-Air updates)	•	•
USB ports - 2 type C in front, 2 type C in rear	•	•
Voice Assist	•	•
Wi-Fi hotspot	•	•
Wireless Phone Charger (WPC)		•

New 01 - MY25	Trim level	Core	More
<b>Climate</b>	Air Quality Control System (AQS)		•
	Climate control - 2-zone automatic	•	•
	Climate outlets in second row (placed in back of center console)	•	•
	Remote climate control (via Lynk & Co app)	•	•
<b>Powertrain, battery and charging</b>	AC charging capability: 6.6 kW	•	•
	Brake Energy Recovery System	•	•
	Drive modes (Power, Hybrid and Pure)	•	•
	Kinetic Energy Recovery System	•	•
<b>Active Safety</b>	Anti Rolling Program (ARP)	•	•
	Anti-lock Brake System (ABS)	•	•
	Brake Assist (BA)	•	•
	Electronic Brakeforce Distribution (EBD)	•	•
	Electronic Stability Control (ESC)	•	•
	Hill Descent Control (HDC)	•	•
	Hill Start Assist control (HSA)	•	•
	Traction Control System (TCS)	•	•
<b>Passive safety</b>	Airbag - Driver	•	•
	Airbag - Far side airbag (between front seats)	•	•
	Airbag - Front driver and passenger side airbags	•	•
	Airbag - Front passenger (with deactivation switch)	•	•
	Airbag - Side curtain airbags	•	•
	Tire pressure warning with display	•	•
<b>Security</b>	Anti-theft alarm with interior monitoring and tilt sensor	•	•
	Auto door lock	•	•
	B-call (Break down rescue call)	•	•
	E-call (Emergency rescue call)	•	•
	Electronic child safety lock	•	•
	EV low speed warning sound	•	•
	Event Data Recorder (EDR)	•	•
	Phone as key (digital key)	•	•
	Remote control keys - 2 units	•	•

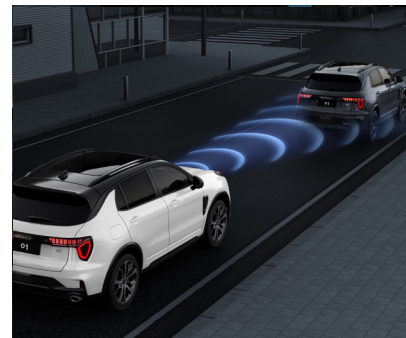
**New 01 - MY25**

**Driver Assist functions**

Trim level	Core	More
Adaptive cruise control (ACC)	•	•
Auto Emergency Braking (AEB)	•	•
Blind Section Detection (BSD)		•
Camera - 360 Camera		•
Camera - Rear view camera	•	
Collision Mitigation Support Rear (CMSR)		•
Door Open Warning (DOW)		•
Driver Alert Control (DAC)	•	•
Emergency Lane Keep Assist (ELKA)	•	•
Highway Assist (HWA)	•	•
Intelligent Speed Assist (ISA)	•	•
Lane Change Assistance (LCA)		•
Lane Departure Warning (LDW)	•	•
Lane Keep Assistance (LKA)	•	•
Max Speed Overspeed Warning	•	•
Park Assistance - Front and rear parking sensors	•	•
Rear Crossing Traffic Alert (RCTA)		•
Traffic Sign Recognition (TSR)	•	•



Rear Cross Traffic Alert (RCTA)



Forward Collision Warning (FCW)

**Others**

AC charger cable Model 2, (for home usage, 230V)	•	•
AC charger cable Model 3 (for public and wallbox usage)	•	•
First aid kit	•	•
Tire repair kit	•	•



## Technical Specifications

### Description

Model	New 01 - MY25
Type	Plug-In Hybrid (PHEV)

### New 01 - MY25

#### Engine and Transmission

<b>Trim level</b>	<b>Both Core and More</b>
Engine name	1.5TD (Turbo Direct Injection)
Engine type	In-line, 4 cyl. Turbocharged
Transmission	3 Speed Hybrid specific - 3DHT Pro
Powertrain	FWD
Displacement	1499 cm <sup>3</sup>
Valves, no/cylinder	4
Engine management system	Gasoline direct injection
Fuel, rec. octane	95-98 RON
Gasoline engine, max torque	230 Nm
Gasoline engine, max power output	102 kW (137 hp)
Electric motor, max torque	338 Nm
Electric motor, max power output	107 kW (143 hp)
Total powertrain (gasoline+electric motor) max torque	535 Nm
Total powertrain (gasoline+electric motor) max power output	206 kW (276 hp)

### Performance

Acceleration 0-100	7.7 s
Top Speed	200 km/h

### Steering

Type	Electric power assisted
Turning circle (Curb to curb)	11.4 m
Turning circle (Wall to wall)	11.8 m

### Battery and charging

Battery type	Lithium-ion
Battery capacity	17.7 kWh
Onboard Charger AC	6.6 kW
Charging time AC (0-100%)	2.8 hours

New 01 - MY25	Trim level	Both Core and More	
Consumption, range and emissions	Electric range combined driving	75 km*	
	Electric energy consumption-combined driving (weighted)	192 Wh/km*	
	Fuel consumption-combined driving (weighted)	0,9 l/100 km*	
	Fuel consumption-combined driving (with empty battery)	6,4 l/100 km*	
	Emissions CO <sub>2</sub> combined driving (weighted)	20 g/km*	
	Emissions CO <sub>2</sub> combined driving (with empty battery)	138 g/km*	
	Emissions standard	Euro 6e	
Exterior measurements	Length	4545 mm	
	Width (folded mirrors)	1860 mm	
	Width (Unfolded mirrors)	1952 mm	
	Height (in running order)	1694 mm	
	Height with open tailgate/trunklid	2088 mm	
	Wheelbase	2734 mm	
	Ride height	206 mm	
	Approach angle	19.5 degr.	
	Departure angle	26 degr.	
Chassis	Suspension front	MacPherson	
	Suspension rear	Independent Multi-link	
New 01 - MY25 Interior Measurements and Load capacity	Trim level	Core	More
	Headroom with panorama roof - high spec (front/rear)	982 mm/985 mm	974 mm/988 mm
	Legroom (front/rear)	1044 mm/999 mm	1044 mm/999 mm
	Hip room (front/rear)	1391 mm/1185 mm	1391 mm/1185 mm
	Trunk volume	466 l	466 l
	Trunk volume, folded rear seats	1213 l	1213 l
	Trunk floor max length (with folded rear seats)	1717 mm	1717 mm
	Cargo floor width, min. (between wheelhousing)	1005 mm	1005 mm
Weight	Total weight, max	2350 kg	2350 kg
	Curb weight	1830 kg	1898 kg
	Max towing weight (braked trailer)	1800 kg**	1800 kg**
	Max towing weight (unbraked trailer)	750 kg**	750 kg**
	Fuel tank, Gasoline	42 l	42 l
Wheels	Wheels	235/50R19	235/45R20

\*The driving range and energy consumption under real conditions vary depending on driving behavior, road conditions, weather, temperature, and other external factors. All range and energy consumption data according to WLTP.

\*\*The maximum towing weight represents the car's total towing capacity, to restart on a 12 percent gradient at sea level. Towing has a negative impact on performance and energy consumption.

LYNK&CO